

Lidera

**YOUR PARTNER
BEYOND DISTRIBUTION**

kaspersky

ALL WE ARE
IS

SECURITY

SERVICES

PROACTIVITY

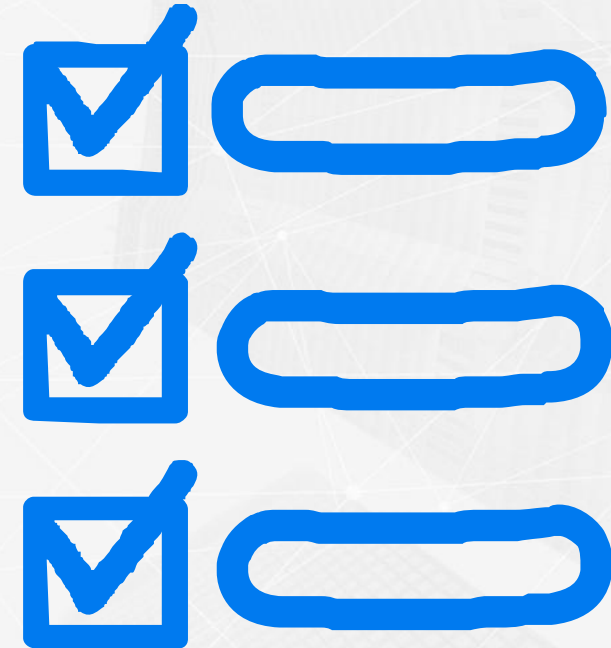
INNOVATION

FLEXIBILITY

Contents

kaspersky

- A few words about Lidera
- The weakest link
- How to protect it?
- What to do first?
- Kaspersky solutions
 - Endpoint Security
 - Security Awareness



Lidera

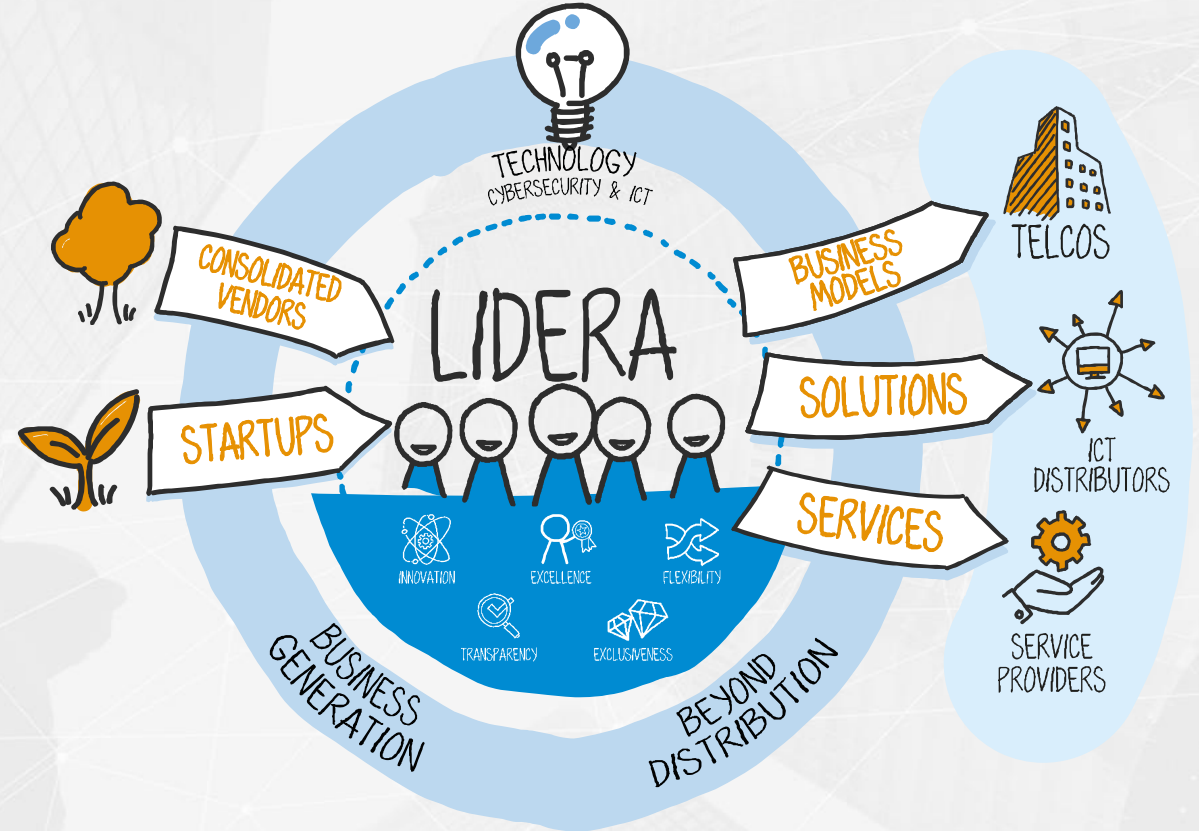
About Lidera Network

- Founded on 2000 as a distributor specialized on CyberSecurity
- Headquarters in Madrid and branch offices in Lisbon and Sao Paulo. Currently expanding the business to LTAM
- Our mission is not only to provide technology to our customers but also truly value added services
- SMB business unit, the value of proximity and agility > 15.000 orders managed every year
- Lidera manages its own MSSP platform. We manage and our partners sell
- End-to-end support. Marketing, financial services, professional services...
- Working with Startup companies offering disruptive technologies

SUMMARIZING:

- +15 technical resources
- More than 1.300 active customers
- Around 50 employees world wide
- Strong financial records
- Operational agility

kaspersky



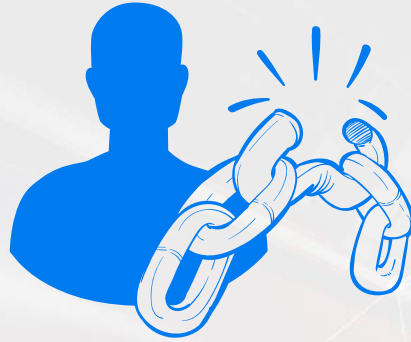
kaspersky

Authorized
Training Center

Lidera

The weakest link

kaspersky



Human Error as a Corporate Cyber-Risk

Employee behavior is a major IT security risk, despite traditional awareness programs being in place:



\$1,057,000

per enterprise organization

The average financial impact of data breaches caused by inappropriate IT resource use by employees *



\$98,000

per SMB

The average financial impact of data breaches caused by inappropriate IT resource use by employees *



\$101,000

per SMB

The financial impact of attacks caused by phishing/social engineering*
((\$1,3M per enterprise) **)



up to **\$400**

per employee per year

The average cost of phishing attacks alone***

How to protect your assets

kaspersky



Lidera

What to do first

kaspersky



PROTECT



AWARENESS

Kaspersky Endpoint Security for Business

kaspersky

Meets all requirements,
prevents mistakes - and scales

Frees up time
for more important things

Protects
against even advanced threats



Threats, vulnerabilities & unencrypted PC discovery



Linux & Windows servers protection



Secure mobile devices



Automatic detection of known TTPs



Post-attack rollback, patch & software distribution



Deep learning - fewer false positives and fewer security alerts



Flexible built-in reports



Web-based management



Anomaly, Application, Web & Device Controls



Scales easily without limits (250 → 2500 → 250.000 PCs)



Security policy advisor



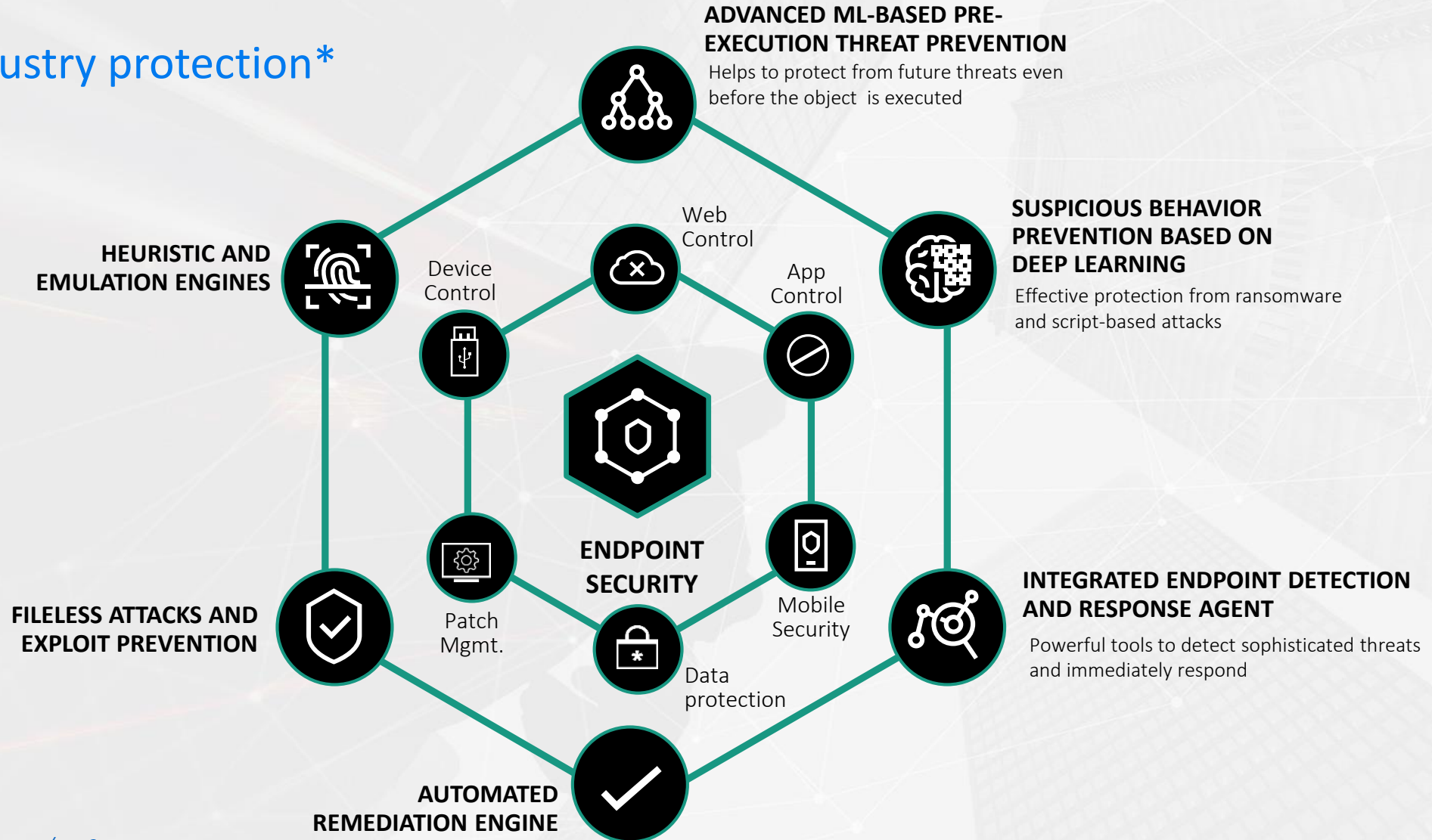
Built-in integration with AD, SIEM and etc.



Prevention technologies

kaspersky

Best-in-industry protection*

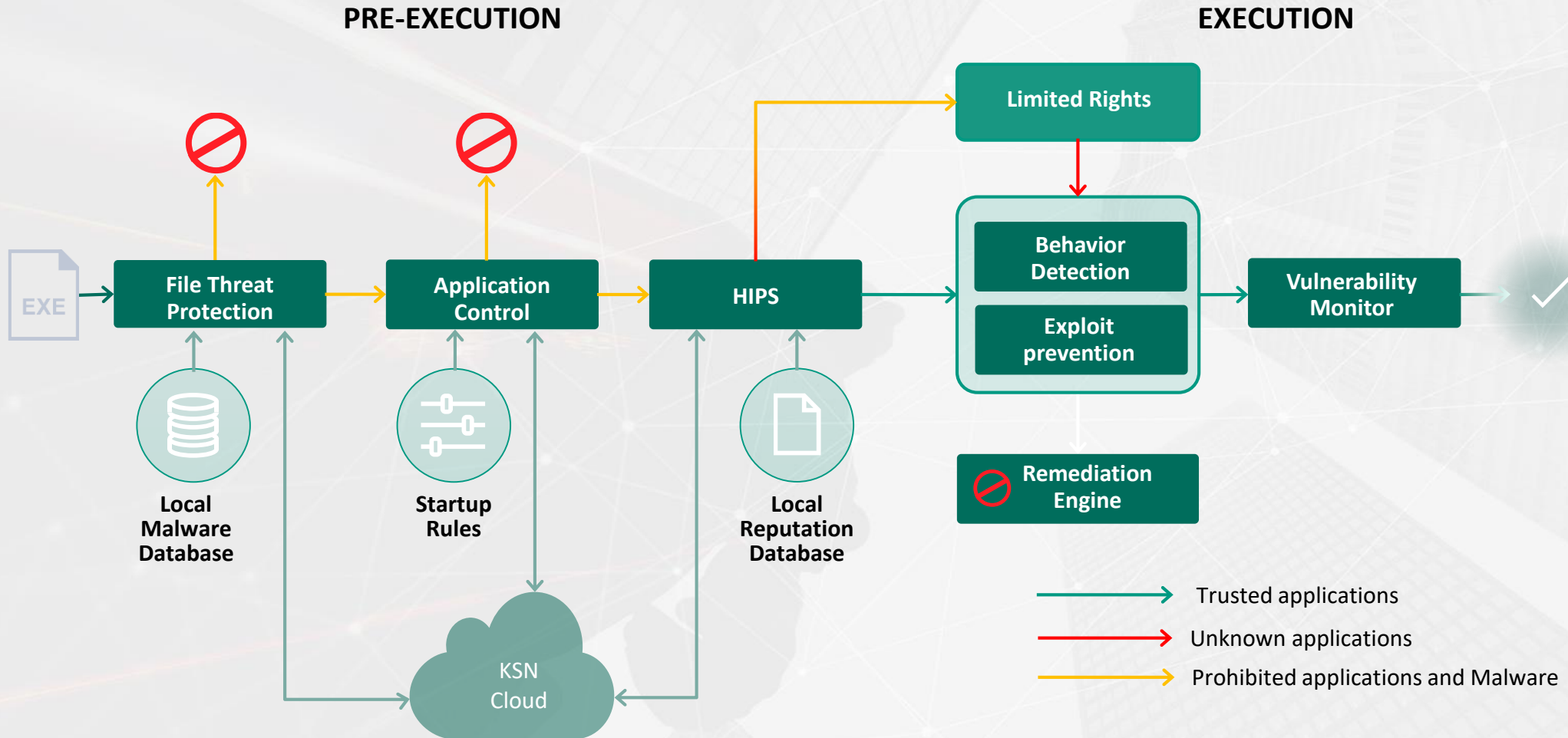


* <https://www.kaspersky.com/top3>



How Kaspersky Endpoint Security Works

kaspersky





Kaspersky Endpoint Security for Business

kaspersky



Kaspersky **TOTAL** Security For Business

- Kaspersky Security for Linux Mail Server
- Kaspersky Secure Mail Gateway
- Kaspersky Security for Microsoft Exchange Servers
- Kaspersky Anti-Virus for Lotus Domino
- Kaspersky Anti-Virus for Proxy Server
- Kaspersky Anti-Virus for Microsoft ISA Server and Forefront TMG
- Kaspersky Security for Sharepoint



Kaspersky Endpoint Security for Business **ADVANCED**

- Gestión de parches y vulnerabilidades de Kaspersky
- Kaspersky Disk Encryption
- Control de inicio de aplicaciones para servidores
- Control de acceso basado en roles
- Integración con SIEM
- Anomaly Adaptive Control

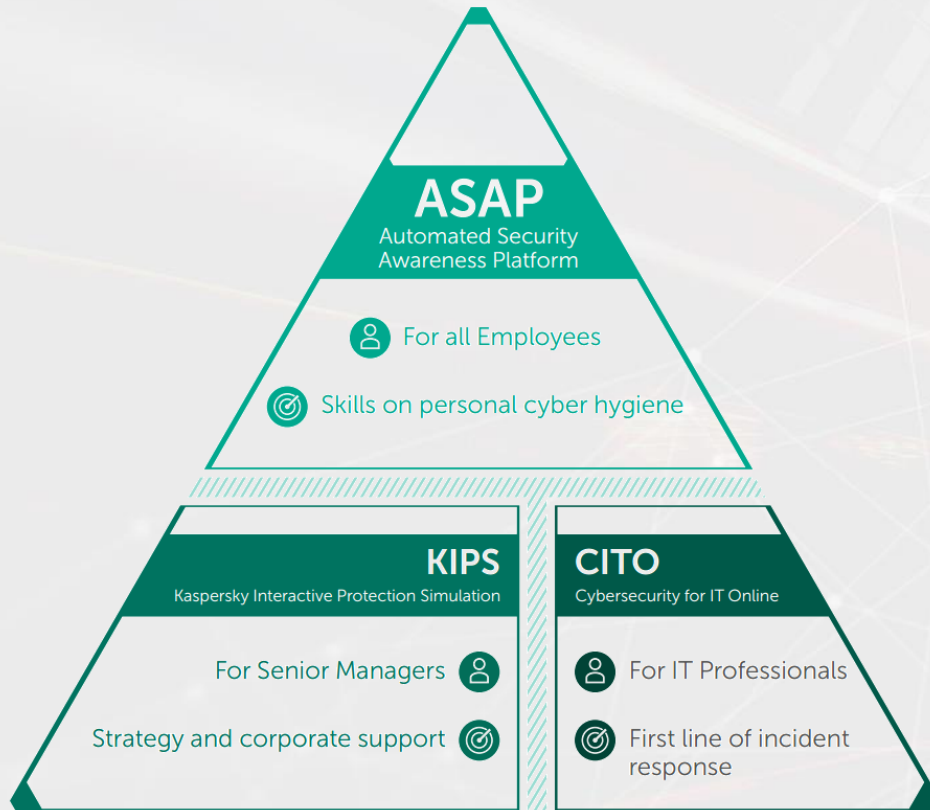


Kaspersky Endpoint Security for Business **SELECT**

- Kaspersky Endpoint Security for Windows
- Kaspersky Endpoint Security for Linux
- Kaspersky Endpoint Security for Mac
- Kaspersky Security for Windows Server
- Kaspersky Security for Mobile
- Kaspersky Security Center

Kaspersky Security Awareness Training Products

kaspersky



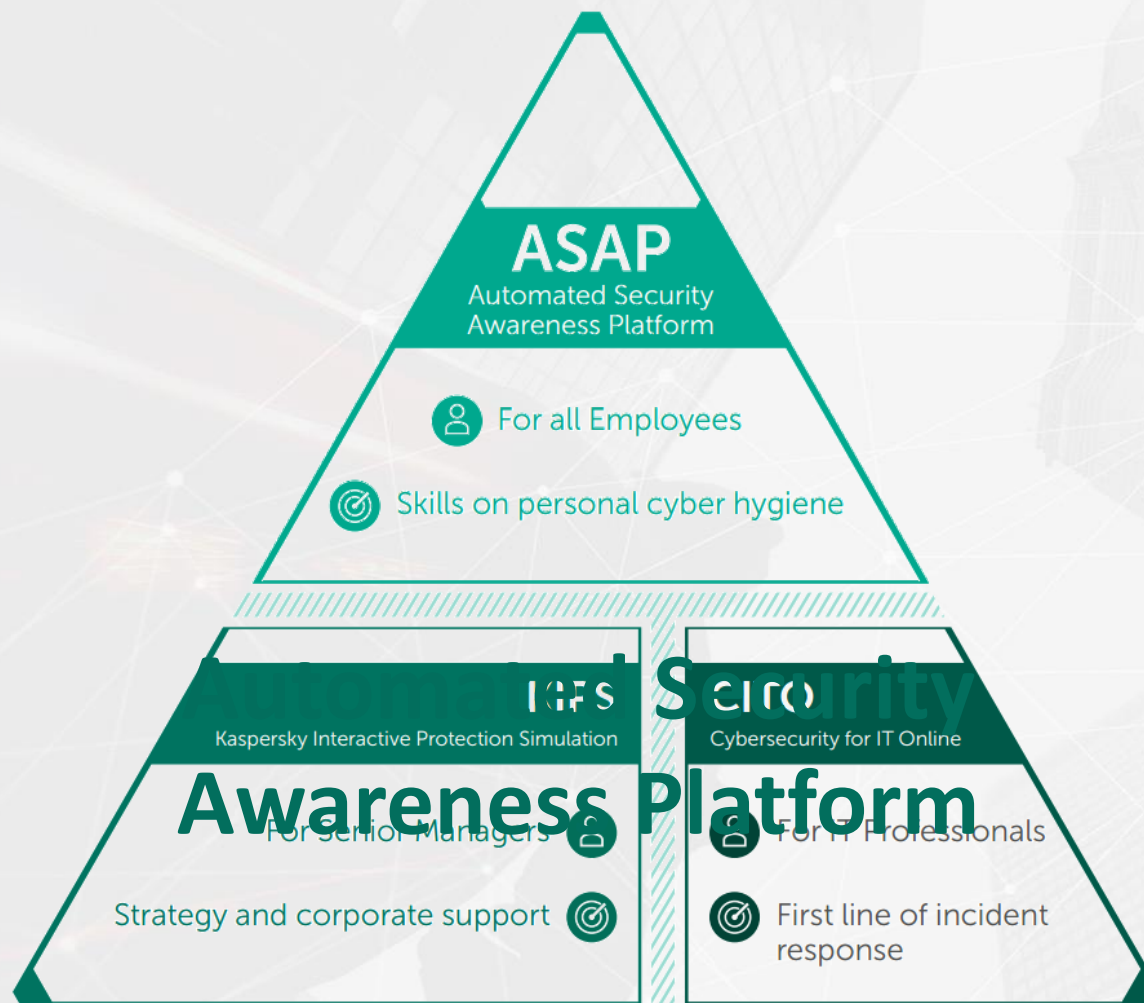
Kaspersky Cybersecurity Awareness comprises of 3 elements which intermesh, but which are also fully effective if used separately.

Skills instead of just knowledge

Computer-based - easy delivery, management & measurement

Real life examples & practical exercises - students engagement and motivation

Clear training structure and latest L&D technologies - easy for administrators, effective for students



Efficiency principles in ASAP

Human-centric approach

kaspersky



CONSISTENT

- 350 specific skills*
- Risk based targets
- Incremental learning
- Multi-modal content (Lessons / Reinforcement / Test / Phishing)
- Interval learning

POSITIVE

- Teaches 'how to' instead taboo
- Convince, turns misconceptions into Cybersafe habitudes

PRACTICAL

- Built on practical cases
- Relevant for employees' everyday job
- Mix of corporate and personal cybersecurity

Lidera

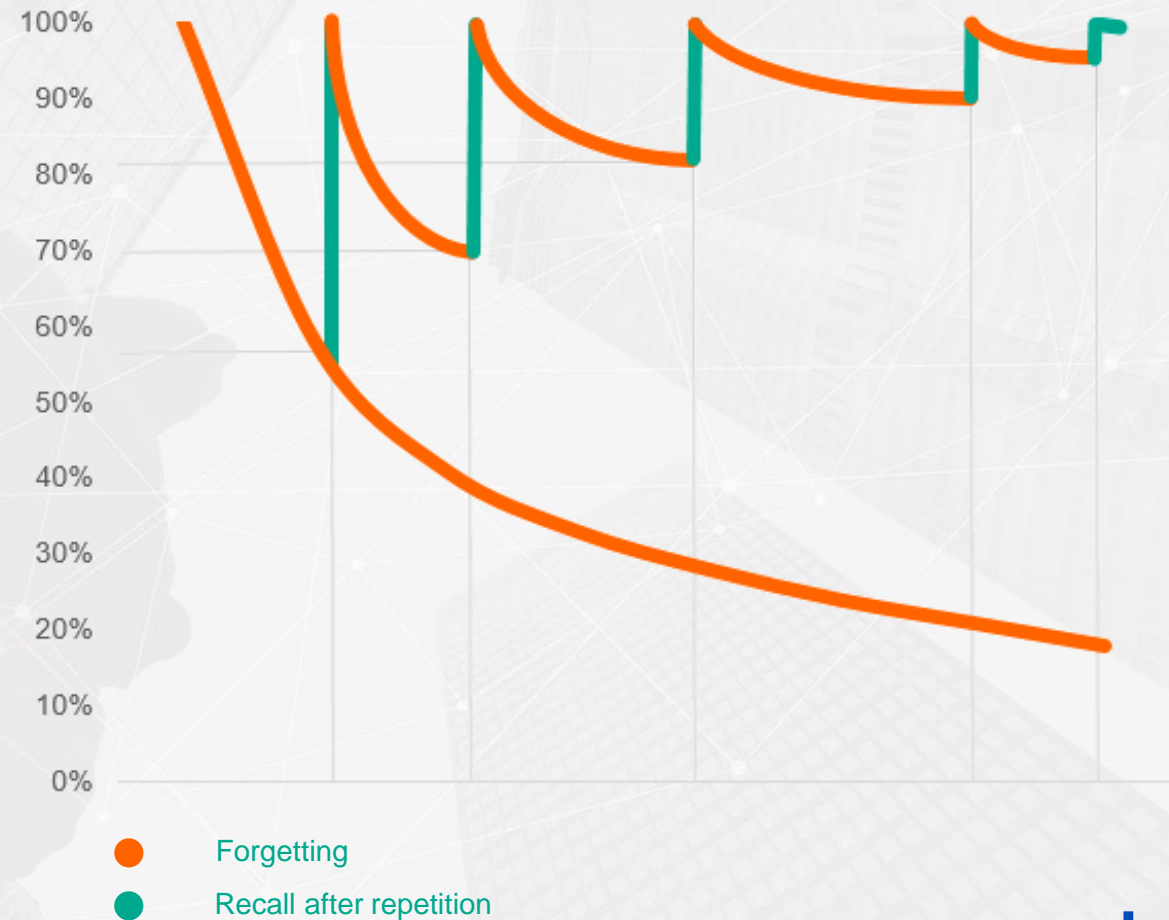
Continuous incremental interval learning makes training understandable and effective.

kaspersky

Ebbinghaus forgetting curve

Multiple repetition firmly reinforces skills.

- Developing previously acquired knowledge in new contexts
- Natural way of learning
- Interval learning with constant reinforcement in accordance with Ebbinghaus study



Do not know what and how to train?

How to create a program and set goals?

kaspersky



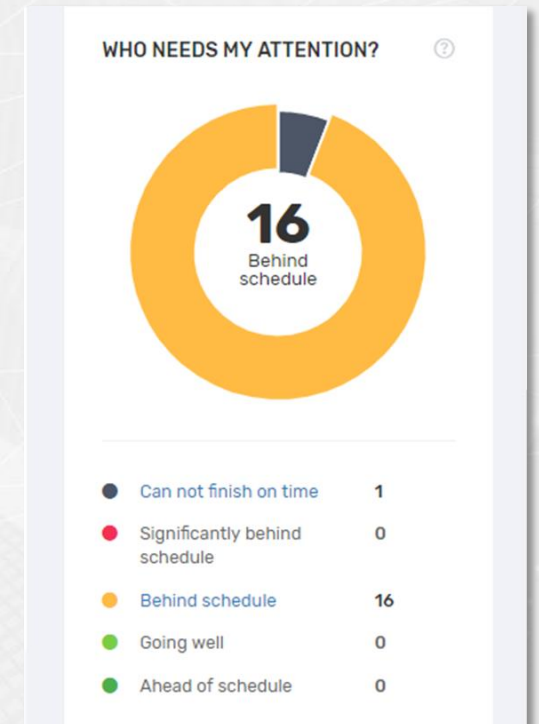
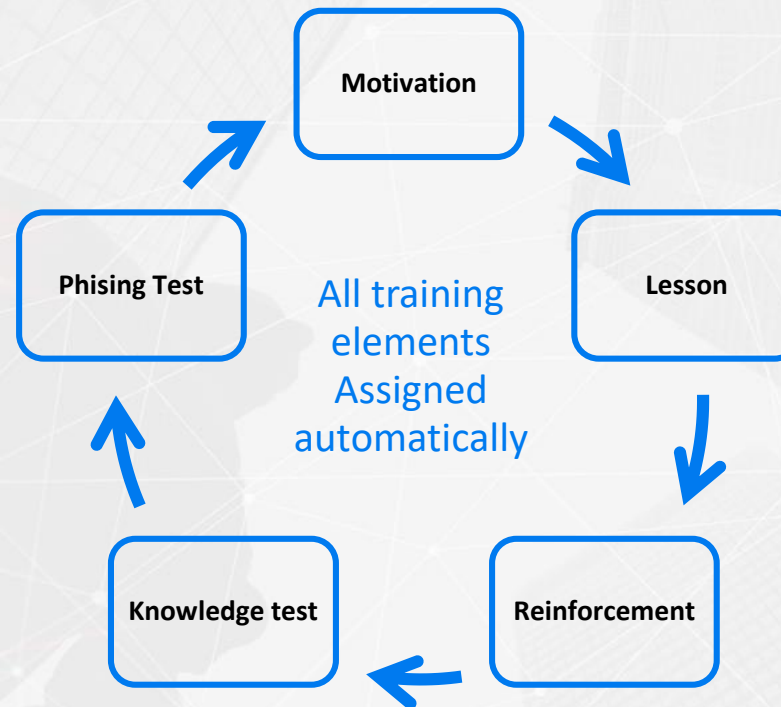
Tips inside the platform to help admins with this part

Scheduling, assigning various elements of training, reminders and notifications - the platform does all this automatically

Save time on learning management

kaspersky

- **Automated management:** scheduling depending on the selected target level
- ASAP **automatically assign all training elements** through a defined interval
- Automated **progress tracking and reminders**
- **Weekly reports** to administrators and students
- ASAP dashboard - instantly **understand what/who needs your attention**



EXAMPLE OF ASAP DASHBOARD

THANK YOU

Avda. Manoteras, 22.
2ª planta - oficina 86.
28050 Madrid
(+34) 902 222 005
(+34) 91 837 58 80

Rua Castilho, 39.
Edif. Castil. 8º andar. Sala F.
1250-068 Lisboa
(+351) 21 370 30 50

Rua Arandu, 205 - cj. 1106
São Paulo - SP
CEP 04562-030
(+55) 11 2738 8745
(+55) 11 2738 8752